



Jet-E .UNO

1/2" turnkey coding solution
Inks for all needs
600 dpi resolution



Anwendung

- **Box coding**
- **Marking**
- **Numbering**
- **Label printing**
- **Serialisation**
- **Inks for all applications**



Jet-E .UNO *1/2" turnkey coding solution with cartridges*

High Resolution Printing

The 1/2".UNO all-in-one printhead and screen give you a simple yet incredibly powerful way to print up to 12mm in height with a minimum of effort. Consisting of a 7" screen with attached printhead, the system allows you to be up and running in minutes.

With thermal inkjet - the proven and extremely reliable printing solution based on HP cartridge technology - Jet-E .UNO is the ideal product for serialization, printing of barcodes and human-readable fonts.

- No mess, no maintenance - HP and TIJ technology
- Permits fixed print data and serialization
- ASCII interface for dynamic data from scanners and PLCs
- Rugged industrial design for the most demanding installations
- Offline generation of print jobs
- Networkable - can be connected to the company network

Inks for all needs

Whether you're printing on matte card stock or glossy surfaces, Jet-E .UNO has inks that dry quickly, are waterproof and adhere to the most difficult surfaces. From paper to cardstock to plastics, we have the ink solution for you.

All-Inclusive Solution

Jet-E .UNO printheads have metal construction for maximum durability and are encased in an aluminum housing. With an industrial touch screen user interface, it is prepared for any operating environment and load. Jet-E .UNO has plug-in connections for encoder and sensor, as well as an Ethernet connection for connection to external data sources and networks. The scope of delivery includes: 1/2" print head, 7" touch screen (with design and job management software), power supply unit, connection cable and material for swivel arm assembly.

Print specification

- 600dpi x 300dpi resolution (up to 1,27 m/s)
- Print density is user configurable
- Barcode Printing: EAN-13/EAN 8, UPC-A, Code128, ITF-14, ITF-2of5, Code39, Cryptocode, GS1 Datamatrix, QR
- 300dpi x 300dpi resolution (up to 2,5 m/s)
- Fixed text and serialisation

What .UNO prints

- Lot numbers, production/expiration dates, shift codes
- Character sets for foreign languages
- Logos, bitmaps, graphics
- Counter and total number of pieces

Jet-E .UNO *variety of fast-drying inks for difficult surfaces*



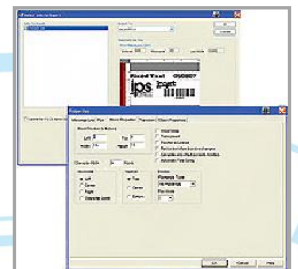
Jet-E .UNO with 7" panel



IPS Director – administration of jobs



Coding od boxes



IPS Producer - Layout Design